



LEPHALALE MUNICIPALITY



IDP& BUDGET ROADSHOW 2024/25

DATE: 03 APRIL 2024

VENUE: MARTINIQUE COMMUNITY HALL

TIME: 10:00

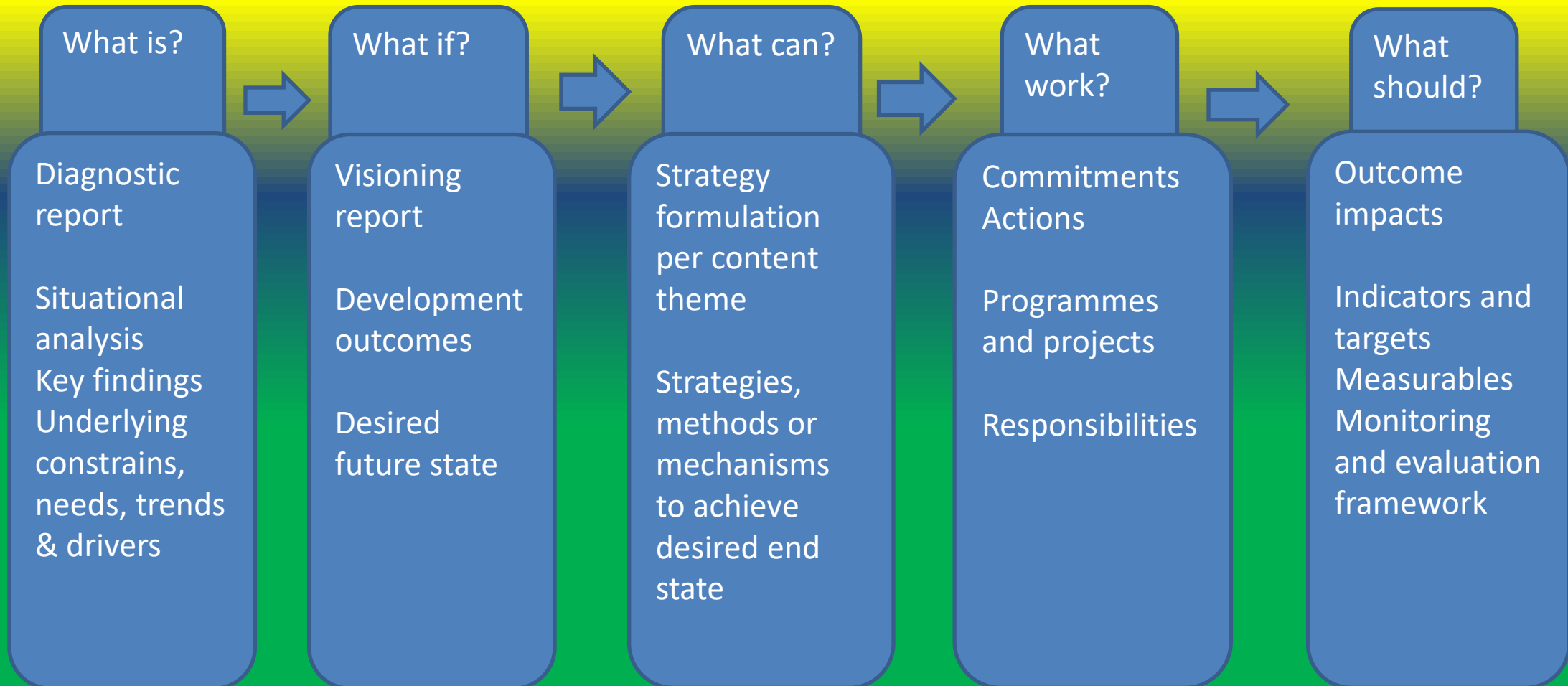
PROGRAMME

TIME	ITEM	RESPONSIBLE PERSON
10H00 – 10H10	Registration	All
10H10 – 10H15	Opening Prayer	Pastor
10H15 – 10H25	1. Opening and Welcome	EXCO Member/ Ward Councilor
10H25-10H45	2. Introductions	CLLR
10H45 - 11H30	3. Opening remarks	Mayor
11H30 -11H45	4. Purpose of the Meeting	MM
11H45-12H45	5. Presentation of draft IDP projects and budget	Manager IDP
12H45 – 13H30	6. Questions for Clarity and Discussions	All
13H30 – 13H45	7. Way forward and closure	Mayor

Vision, Mission and Values

VISION	“ A VIBRANT CITY AND THE ENERGY HUB “
MISSION	“We are committed to integrated development, provision of quality, sustainable and affordable services, financial viability, good governance, local economic development and job creation”
VALUE	DISCRIPTION
Community orientation	Provide and deliver sustainable quality services for the whole community
Transparency	Invite and encourage public sharing and democratic participation in council activities
Commitment	Focus and concentrate on council’s core activities in a consistent manner
Integrity	Conduct council’s business in a fair, responsible, flexible, equitable and honest manner
Accountability	Report regularly to all stakeholders regarding council’s actual performance
Empowerment	To be seen to be empowering our people , knowledge is power
Environmental care	Focus on taking care of the environment despite all development taking place
Performance appraisal	Continually evaluate and monitor performance against set target

IDP formulation process

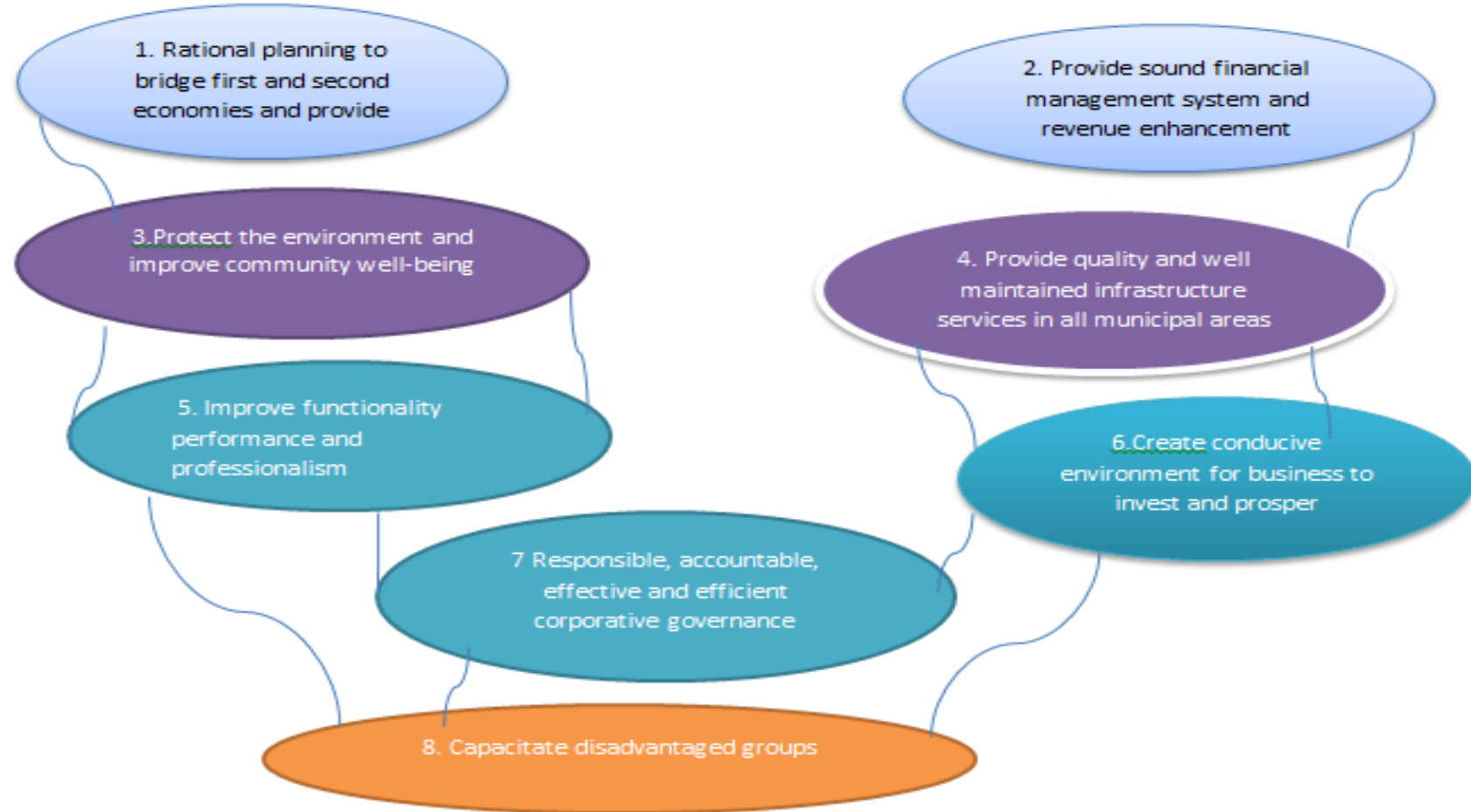


Strategy Map

"a vibrant city and the energy hub"

STRATEGIC PERSPECTIVE

Community
Finances
Internal Processes
Learning and growth



IMPROVE FUNCTIONALITY, PERFORMANCE AND PROFESSIONALISM

Out Put

- Zero tolerance of corruption and fraud
- Ensure clean audit results from 2025 onwards
- Risk conscious and responsive environment
- Informed and engaged stakeholders
- Integrated and credible IDP that drives budget process
- Empowered workforce that is more efficient and effective
- Community involvement in Council affairs

Key Indicator

- Ensure accountability through implementation of integrated performance management.
 - All allegations received on corruption related issues are fully investigated and corrective measures are taken
 - Number of Unqualified Performance Opinion
 - Percentage of risks that were identified for each quarter in the Risk Plan and were attended to successfully
 - MEC IDP credibility rating
 - Number of audit findings against the municipality
 - Number of ward committees that are functional
 - Number of IDP Rep forums meetings successfully held

RATIONAL PLANNING TO BRIDGE FIRST AND SECOND ECONOMIES AND PROVIDE ADEQUATE LAND FOR DEVELOPMENT.

Output

- Land availability for development in urban area
- Sustainable integrated rural development
- Informed spatial planning
- Socio- Economic survey
- Orderly land use
- Safe and formalised housing structures

Key Indicators

- Review and develop new by-laws for submission to council for vetting and gazetting
- Integrated Arc GIS operational (data collection and analysis)
- Average turn round time (weeks) related to applications of land use (township establishment) from time of receipt until consideration by EXCO
- Increase access to decent housing
- Enforcement of MULS, Review of SDF in line with SPLUMA (DDM)
- Enforce compliance of municipal building regulations

ENHANCE REVENUE AND FINANCIAL MANAGEMENT

Out Put

- Creditable financial reporting
- Affordable access to basic services
- Maintenance of sound financial management and viability
- Credible procurement processes
- Sustainable assets
- Increased revenue

Key Indicator

- Ensure timely, cost effective, transparent, and fair procurement of good and services.
- Update and verify indigent register on a regular basis and provide free basis service to indigents
- Ensure that that the asset register is compliant with GRAP and other prescriptions.
- Prepare, implement and monitor credible and funded budget .
- Cash flow management and payment of creditors within 30 days and timeous payment of salaries.
- Implement revenue enhance and cost containment strategies to maintain and increase cost coverage and liquidity

PROVIDE QUALITY AND WELL-MAINTAINED INFRASTRUCTURAL SERVICES IN ALL MUNICIPAL AREAS

Out Put

- Water infrastructure maintenance and Upgrading
- Access to water and electricity supply to all the community
- Sustainable environment and sanitation infrastructure
- Energy Efficiency
- Sustainable roads and storm water infrastructure
- Smooth flowing traffic

Key Indicator

- New water and sanitation infrastructure projects; maintenance and upgrading programme
- Reduce water loss to less than 14% and embark on awareness campaign on water conservation
- Percentage households with access to basic level of sanitation, water and electricity.
- Blue drop and green drop water and sanitation quality standard rating.
- Implementation of preventative maintenance plans and adherence to service standards
- Implement energy efficiency measures
- Unlocking industrial corridors and number of KM roads constructed; maintained and refurbished

CREATE A CONDUCTIVE ENVIRONMENT FOR BUSINESSES TO INVEST AND PROSPER

Out Put

- Employment opportunities
- Good Stakeholder Relations
- Marketing and branding
- SMME's and Tourism Development
- Mining Development/Energy generation and Agriculture development
- Establishment of development agency

Key Indicator

- Mining, Energy generation and Agriculture development.
- Create employment opportunities through Municipal LED and Capital projects and strategic partners.
- Develop Collaboration agreements with both public and private entities on programme implementation.
- Co-ordinate municipal licensing for small traders and capacitate emerging farmers.
- Promote tourism establishments and attraction facilities.
- Engage with stakeholders and co-ordinate local economic development initiatives and activities.

PROTECT THE ENVIRONMENT AND IMPROVE COMMUNITY WELL-BEING

Out Put

- Safe, clean and sustainable green environment
- Safety of all road users
- Changed driver behaviors
- Safe and secured communities
- Provide clean and healthy environment
- Access to Governmental information service
- Literate and numerate community

Key Indicator

- Provide waste management services.
- Educate and empower communities on waste management.
- Establish waste transfer and drop off centers
- Well maintained amenities, road reserves, recreational facilities, parks and burial sites.
- Number of competent drivers and roadworthy vehicles tested and inspected on public roads.
- Percentage in reduction of fatal and road traffic accidents within municipal area.
- Thusong centre services campaigns held.
- Number of literacy and numeracy campaigns held.

RESPONSIBLE, ACCOUNTABLE, EFFECTIVE AND EFFICIENT CORPORATE GOVERNANCE

Out Put

- Competent and skilled workforce.(skills for economy)
- Business intelligence
- Safe working environment.
- Improved and informed decision making
- Sustainable fixed assets.
- Accountable and responsible administration.

Key Indicator

- Review organizational structure and conduct institutional study.
- Ensure running of Municipal ICT information systems, application, servers, and computer network.
- Ensure compliance to Occupational Health and Safety Act.
- Conduct land audit on Municipal property and ownership in general.
- Always ensure safe keeping of council documentation.
- Minimize unwarranted litigation and legal costs.

Proposed Percentage Increase for 2024/25

Tariff increase

- Rates 6.0%
- Electricity 7.4%
- Water 6.0%
- Sewerage 6.0%
- Refuse 6.0%

Electricity increase is in line with NERSA guideline

Assumptions for the 2024/25 MTREF – free basic services

- 15.74% of house holds are classified as indigent
- Level of free basic services provided:

Expenditure item	Level provided	Level required to provide i.t.o. legislation
Electricity	50kwh	50kwh
Water	6kl	6kl
Sewerage	100% Rebate	100% Rebate
Refuse	100% Rebate	100% Rebate

- There are no significant over / under legislated levels of FBS provided

Grants allocations for MTREF

ITEM	Budget 2024/2025	Budget 2025/2026	Budget 2026/2027
GRANTS			
EQUITABLE SHARES	241 654 000	254 298 000	266 256 000
MIG – PMU	2 521 250	2 640 050	2 861 150
FMG	1 800 000	1 900 000	2 000 000
EPWP	1 311 000		
	247 286 250	258 838 050	271 117 150
MIG	47 903 750	50 160 950	54 361 850
INEP		12 412 000	11 212 000
ENERGY EFFICIENCY AND DEMAND SIDE MANAGEMENT GRANTS	4 000 000	4 000 000	
WSIG	39 147 000	35 000 000	45 000 000
WSIG 6B	102 954 000	103 300 000	87 611 000
TOTAL CAPITAL GRANTS	194 004 750	204 872 950	198 184 850
TOTAL GRANTS	441 291 000	463 711 000	469 302 000

Financial Revenue by Source for MTREF

DESCRIPTION			
	BUDGET 2024/2025	BUDGET 2025/2026	BUDGET 2026/2027
Revenue By Source			
Property rates	- 126 113 439	- 131 914 657	- 137 850 817
Service charges - electricity revenue	- 265 322 299	- 277 527 125	- 290 015 845
Service charges - water revenue	- 71 769 989	- 75 143 179	- 68 417 530
Service charges - sanitation revenue	- 29 030 643	- 30 366 053	- 31 732 525
Service charges - refuse revenue	- 23 255 985	- 24 325 760	- 25 420 419
Rental of facilities and equipment	- 791 056	- 827 445	- 870 809
Interest earned - external investments	- 7 162 122	- 7 491 580	- 7 828 701
Interest earned - outstanding debtors	- 37 192 813	- 38 374 388	- 23 957 872
Interest earned - outstanding debtors - Property Rates	- 15 461 521	- 16 172 750	- 16 900 524
Fines, penalties and forfeits	- 1 013 035	- 1 059 635	- 1 107 318
Agency services	- 9 622 787	- 10 065 435	- 10 518 379
Transfers and subsidies	- 247 286 250	- 258 838 050	- 271 117 150
Other revenue	- 4 425 236	- 4 630 217	- 4 638 599
Total Revenue (excluding capital transfers and contributions)	- 838 447 174	- 876 736 273	- 890 376 490

Operating Expenditure per Item

DESCRIPTION	BUDGET 2024/2025	BUDGET 2025/2026	BUDGET 2026/2027
Employee related costs	265 297 876	280 154 558	295 563 058
Remuneration of councillors	15 400 984	16 263 439	17 157 928
Debt impairment	47 275 773	39 450 458	41 225 729
Depreciation & asset impairment	94 726 306	99 083 716	103 542 483
Finance charges	19 600 559	20 502 185	21 424 783
Bulk purchases – electricity	193 203 577	223 536 539	204 631 776
Inventory consumed	53 430 639	55 888 448	58 403 428
Contracted services	68 553 061	70 068 501	73 221 584
Transfers and subsidies	1 054 137	1 102 627	1 152 245
Other expenditure	77 092 104	69 009 098	72 114 507
Total Expenditure	835 635 016	875 059 569	888 437 522
Operational Surplus	- 2 812 158	- 1 676 703	- 1 938 968

Medium Term Revenue & Expenditure Framework Capital Programme

CAPITAL EXPENDITURE PROMME & PROJECTS			MTREF			FUNDING SOURCE
KPA	Need/Challenge	Programme	2024/25	2025/26	2026/27	
Water	Water loss due pipe bursts	Replacement of AC pipes HDPE/Upvc water pipes in Lephalale town (residential)	R 24 784 906			DWS
Water	Water loss due pipe bursts	Replacement of AC pipes HDPE/Upvc water pipes in Onverwacht (section B)	R 23 588 505			DWS
Water	Water loss due pipe bursts	Replacement of AC pipes HDPE/Upvc water pipes in Lephalale (CBD)	R 20 660 238			DWS
Water	Water loss due pipe bursts	Replacement of AC pipes HDPE/Upvc water pipes in Marapong Zone 2		R28 566 553		DWS
Water	Water loss due pipe bursts	Replacement of AC pipes HDPE/Upvc water pipes in Marapong Zone 1	R 6 947 437	R 35 000 000		DWS

Medium Term Revenue & Expenditure Framework Capital Programme

CAPITAL EXPENDITURE PROMME & PROJECTS			MTREF			FUNDING SOURCE
KPA	Need/Challenge	Programme	2024/25	2025/26	2026/27	
Water	Insufficient water provision to community	Marapong bulk water supply pipeline	R 13 987 039	R	R	DWS
Water	Insufficient water provision to community	Marapong storage facility-construction of 2x3ML steel reservoirs	R 3 972 752	R	R	DWS
Electricity	Provision of better services, safety and security	Installation of high masts lights in various villages	R 17 550 000	R	R	MIG
Roads and storm water	Provision of infrastructure services	Sefitlhogo village internal access road	R 20 353 750	R	R	MIG
Sport and recreation	Improvement of recreational facilities	Refurbishment of Thabo Mbeki stadium	R 10 000 000	R	R	MIG

Medium Term Revenue & Expenditure Framework Capital Programme

CAPITAL EXPENDITURE PROMME & PROJECTS			MTREF			FUNDING SOURCE
KPA	Need/Challenge	Programme	2024/25	2025/26	2026/27	
Roads and storm water	Provision of infrastructure services	Martinique village internal access road	R	R 15 237 700	R	MIG
Electricity	Efficient electricity services	Energy efficiency and demand side management	R 4 000 000	R	R	INEP
Sanitation	Provision of sanitation services	Technical report for VIP toilets	R 60 000	R	R	LLM
Electricity	Efficient electricity services	Replacement of switch gears x 2	R 1 400 000	R	R	LLM
Electricity	Provision of electrical network	Electrification of various villages	R 3 256 200	R	R	LLM
Electricity	Upgrade and maintenance of electricity network	Solar Plant technical report	R 400 000	R	R	LLM
Electricity	Efficient electricity services	Equipping and electrification of borehole at Madibaneng village	R 650 000	R	R	LLM

Medium Term Revenue & Expenditure Framework Capital Programme

CAPITAL EXPENDITURE PROMME & PROJECTS				MTREF			FUNDING SOURCE
KPA	Need/Challenge		Programme	2024/25	2025/26	2026/27	
Water	Inadequate provision of water to community		Conduct an assessment and compile technical report for Ga-Seleka water scheme	R 1 500 000	R	R	LLM
Water	Inadequate provision of water to community		Conduct an assessment and compile technical report for Shongoane water scheme	R 1 500 000	R	R	LLM
Water	Inadequate provision of water to community		Supply, delivery, offloading and installation of Jojo tanks in various villages	R 300 000	R	R	LLM
Water	Inadequate provision of water to community		Mokuruanyane and Shongoane RWS	R 7 900 000	R	R	LLM
Sanitation	Provision of conducive environment for business to invest and prosper		Zeeland water treatment works -appointment of transactional advisor	R 1 300 000	R	R	LLM

Medium Term Revenue & Expenditure Framework Capital Programme

CAPITAL EXPENDITURE PROMME & PROJECTS			MTREF			FUNDING SOURCE
KPA	Need/Challenge	Programme	2024/25	2025/26	2026/27	
Oversight	Accountable, Efficient, and Effective corporate service	Mayoral vehicle	R 700 000	R	R	LLM
Sanitation	Accountable, Efficient, and Effective corporate service	1 x LDV Vehicle	R 350 000	R	R	LLM
Sanitation	Provision of efficient sanitation services	Sanitation pipeline inspection camera	R 200 000	R	R	LLM
Safety and Security	Safe working environment	Mobile walk-through metal detector	R 200 000	R	R	LLM
Traffic	Protection of community well being	Resealing of testing ground	R 3 000 000	R	R	LLM

Medium Term Revenue & Expenditure Framework Capital Programme

CAPITAL EXPENDITURE PROMME & PROJECTS			MTREF			FUNDING SOURCE
KPA	Need/Challenge	Programme	2024/25	2025/26	2026/27	
LED	Create conducive environment for business to invest and prosper	Development of Lephalale economic growth strategy for vision 2050 – development agency	R 3 000 000	R	R	LLM
Corporate support service	Business intelligence	Equipment's, computers and IT system upgrade	R 1 000 000	R	R	LLM
Corporate support service	Accountable, effective and responsible administration	Furniture for safe room	R 150 000	R	R	LLM
Corporate support service	Accountable, effective and responsible administration	Office equipment	R 300 000	R	R	LLM

Medium Term Revenue & Expenditure Framework Capital Programme

CAPITAL EXPENDITURE PROMME & PROJECTS			MTREF			FUNDING SOURCE
KPA	Need/Challenge	Programme	2024/25	2025/26	2026/27	
Mechanical	Responsible, accountable, effective and efficient service	Purchase of 1 x LDV for mechanical department	R 350 000	R	R	LLM
Water	Water loss due pipe bursts	Replacement of AC pipes HDPE/Upvc water pipes in Onverwacht (Section A)	R 32 199 563	R39 147 000		DWS
Roads and storm water	Provision of infrastructure services	Letlora village internal access road	R	R32 000 000	R	MIG
Parks, open space and recreational facilities	Protection of community well being	2 X Lawn mowers	R 90 000	R	R	LLM
Parks, open space and recreational facilities	Protection of community well being	4 X Chain pole pruners	R 20 000	R	R	LLM

Medium Term Revenue & Expenditure Framework Capital Programme

CAPITAL EXPENDITURE PROMME & PROJECTS			MTREF			FUNDING SOURCE
KPA	Need/Challenge	Programme	2024/25	2025/26	2026/27	
Parks, open space and recreational facilities	Protection of community well being	6 x Walk behind machines	R 100 000	R		LLM
Library and information services	Access to information sources and resources	3 x Handheld computer scanners	R 3 000	R	R	LLM
Parks, open space and recreational facilities	Provision of recreational facilities	Construction of outdoor gym at one of the parks in Onverwacht	R 15 124 744	R	R	LLLM/PPP
Parks, open space and recreational facilities	Provision of recreational facilities	Hockey astro tuff field	R 28 000 000	R	R	LLM/PPP

Medium Term Revenue & Expenditure Framework Capital Programme

CAPITAL EXPENDITURE PROMME & PROJECTS			MTREF			FUNDING SOURCE
KPA	Need/Challenge	Programme	2024/25	2025/26	2026/27	
Parks, open space and recreational facilities	Provision of recreational facility	Construction of sport facility between the following villages: Sefitlhogo, Morwe, Lebu and Botshabelo	R 33 526 917	R	R	MIG

CONCLUSION

REA LEBOGA

THANK YOU

BAIE DANKIE